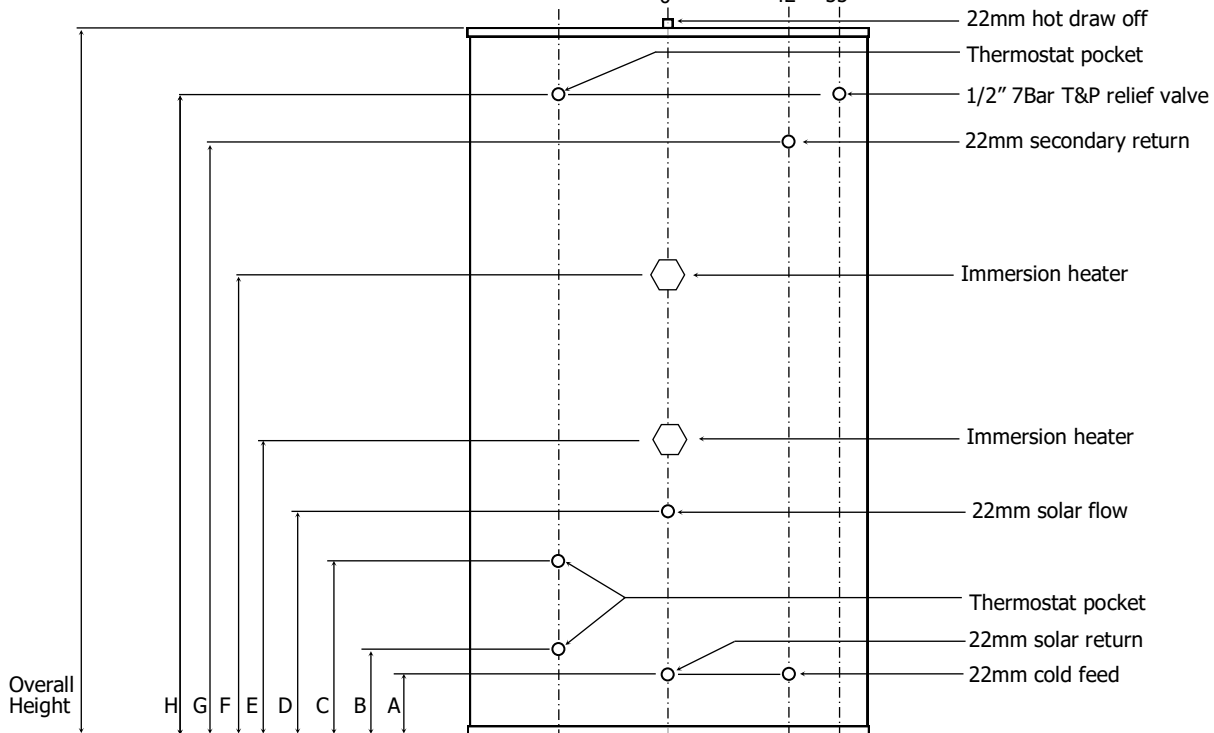


Technical Data Sheet

Tempest Direct Solar

400-500L	32°	0°	32°	42°
200-300L	38°	0°	38°	50°
90-170L	42°	0°	42°	55°



All unvented cylinders come with an unvented component kit to suit.

Capacity (L)	150	170	200	250	300
Height (mm)	1060	1200	1120	1490	1650
Diameter (mm)	510	510	580	580	580
A (mm)	170	170	195	195	195
B (mm)	170	170	245	245	245
C (mm)	390	390	390	435	435
D (mm)	500	500	500	500	500
E (mm)	535	545	570	570	570
F (mm)	635	645	770	770	770
G (mm)	700	890	890	1020	1020
H (mm)	1000	1040	930	1140	1430

Capacity (L)	150	170	200	250	300
Reheat from cold (minutes)	30	32	33	35	40
ERP Band	C	C	C	C	C
Immersion Rating (kw)	2 x 3kw	2 x 3kw	2 x 3kw	2 x 3kw	2 x 3kw
Standing Heat Loss (kwh/24hrs)	1.72	1.92	2.04	2.16	2.32



T: 01952 257961
F: 01952 253452

E: sales@telford-group.com
W: www.telford-group.com